



Co-funded by the  
Erasmus+ Programme  
of the European Union



Grupo de Desarrollo Rural Subbética



## MANAGEMENT TOURIST CAVES IN LANZAROTE AND CHINIJO ISLANDS UNESCO GLOBAL GEOPARK



Elena Mateo-Mederos

### C1.- TRAINING COURSE



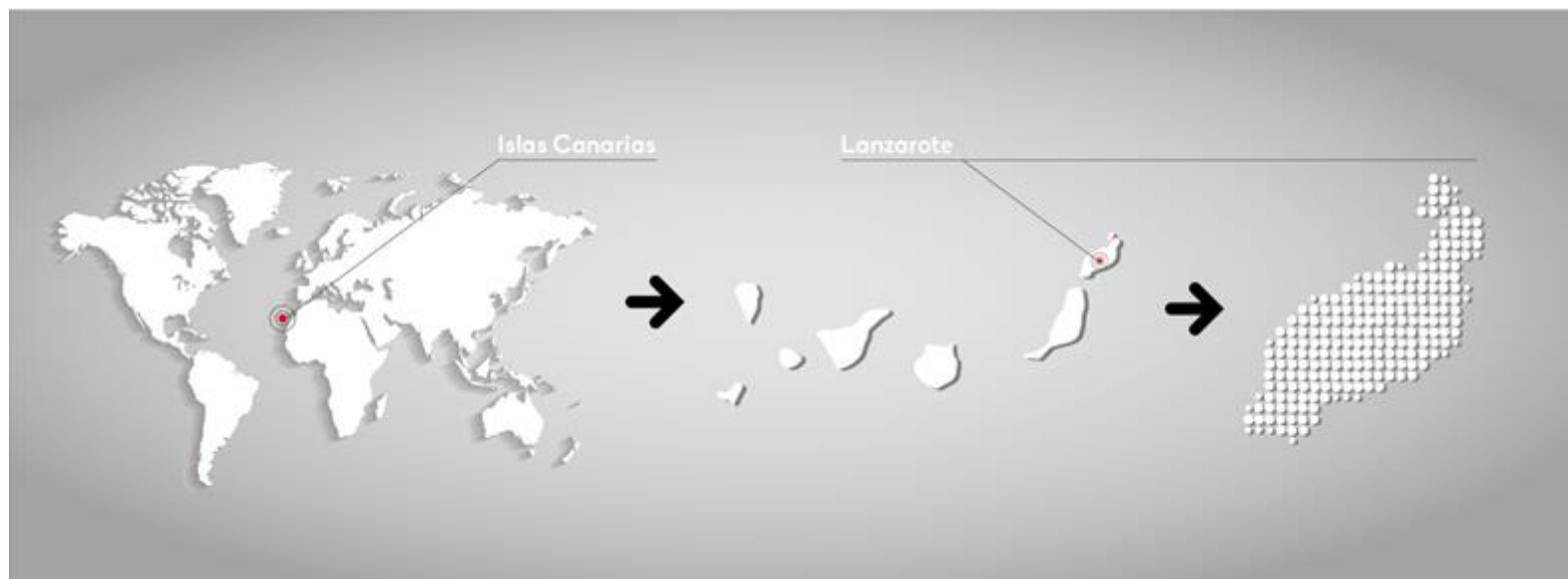
*The European Commission's support for the production of this publication does not constitute an endorsement of the contents, which reflect the views only of the authors, and the Commission cannot be held responsible for any use which may be made of the information contained therein.*



Co-funded by the  
Erasmus+ Programme  
of the European Union



## LOCATION





Co-funded by the  
Erasmus+ Programme  
of the European Union





Co-funded by the  
Erasmus+ Programme  
of the European Union

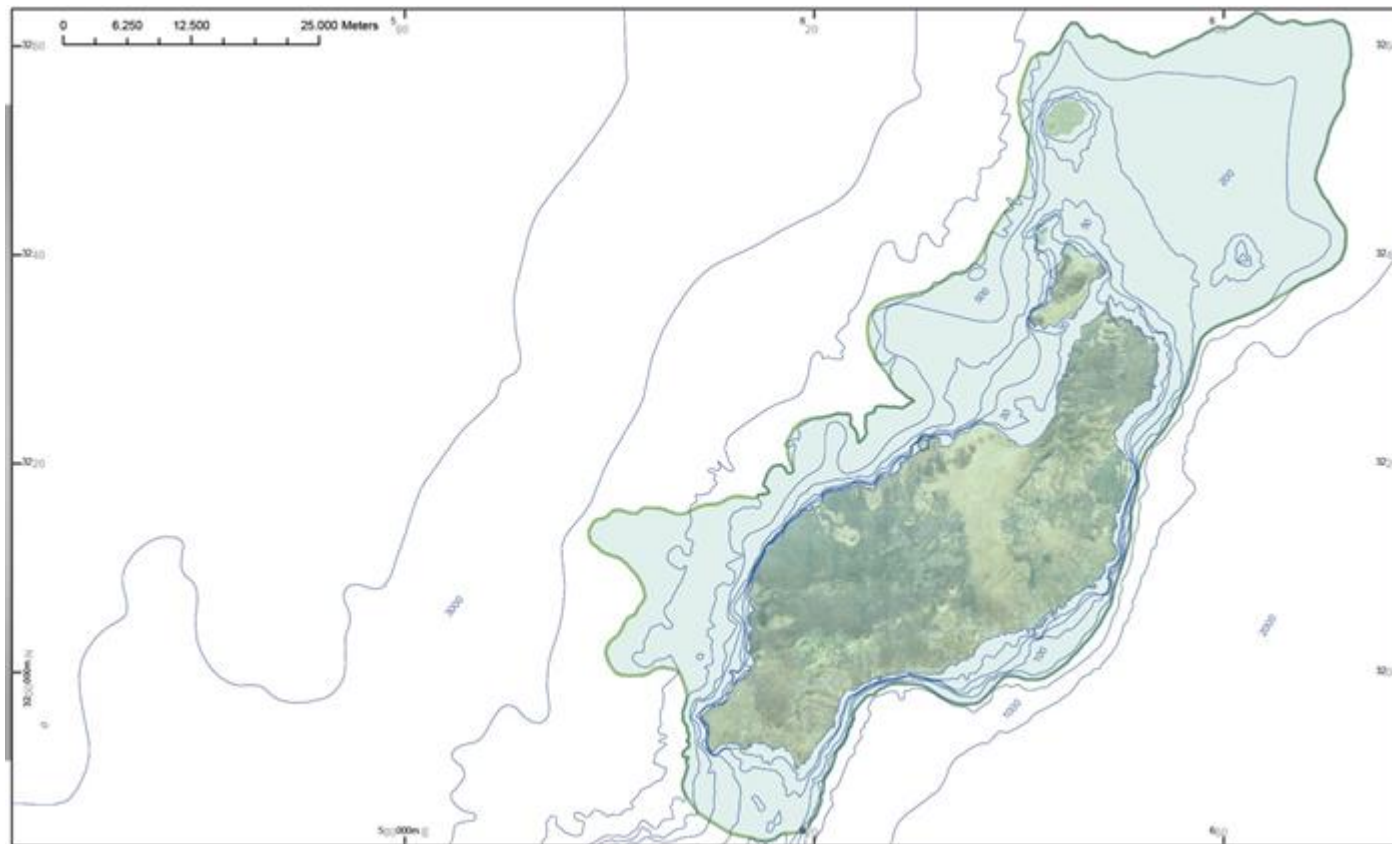




Co-funded by the  
Erasmus+ Programme  
of the European Union



## Lanzarote and Chinijo Islands UNESCO Global Geopark





## GEPARK IN FIGURES:

- Extension: 2,500 km<sup>2</sup>
- Emerged lands: 886 km<sup>2</sup>
- Population: 140.000 inhabitants
- Annual visitors: 3.000.000 (pre-pandemic)

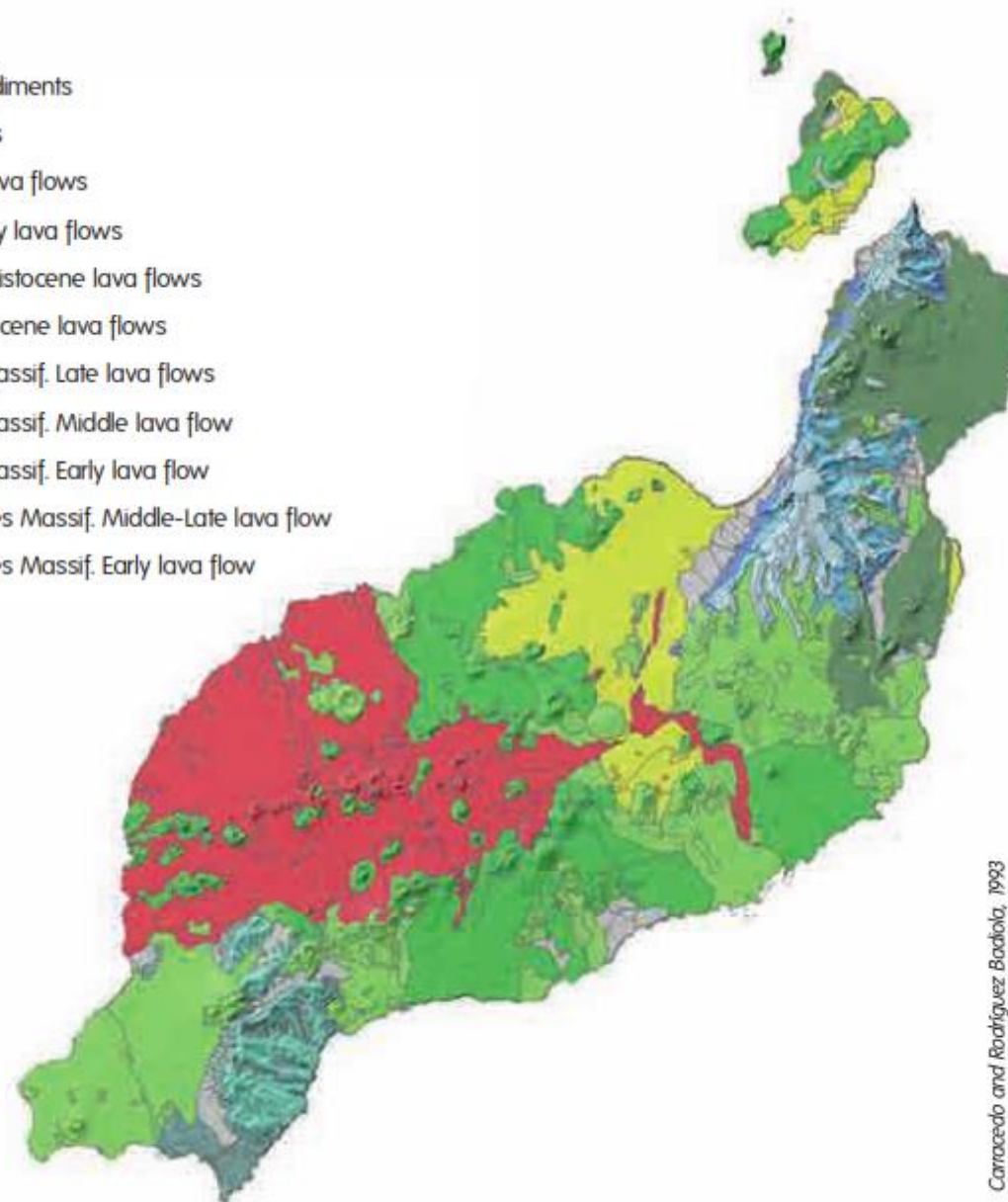




Co-funded by the  
Erasmus+ Program  
of the European Uni



- Recent sediments
- Eolic sands
- Modern lava flows
- Quaternary lava flows
- Middle Pleistocene lava flows
- Pre-Pleistocene lava flows
- Famara Massif. Late lava flows
- Famara Massif. Middle lava flow
- Famara Massif. Early lava flow
- Los Ajaches Massif. Middle-Late lava flow
- Los Ajaches Massif. Early lava flow



Carracedo and Rodríguez Badiola, 1993

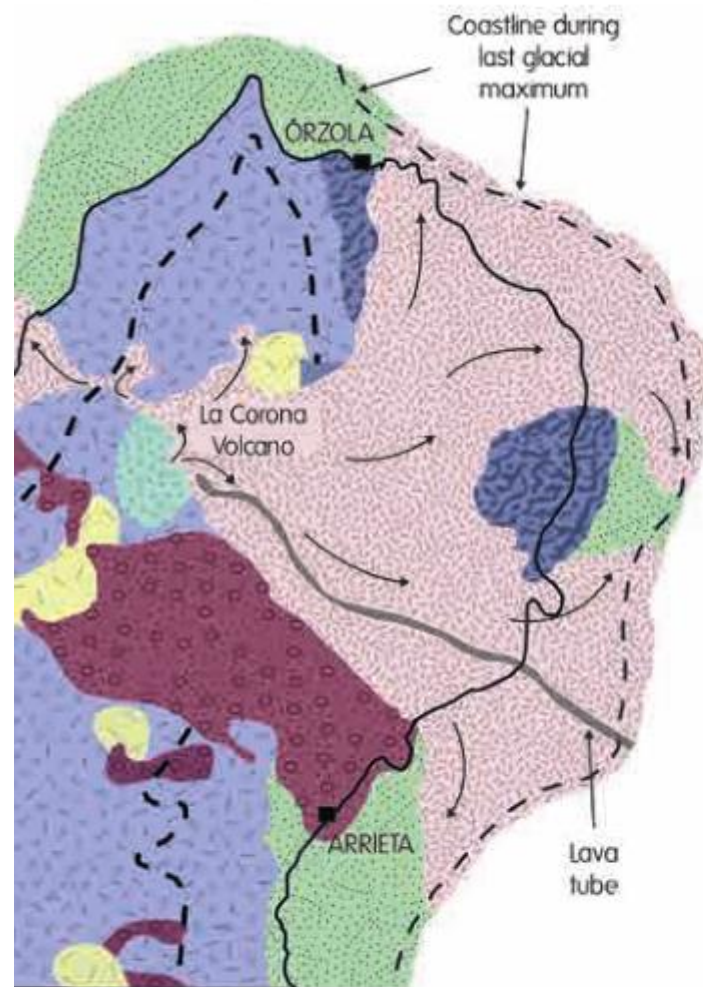
**Map 2.** Geological composition of Lanzarote.



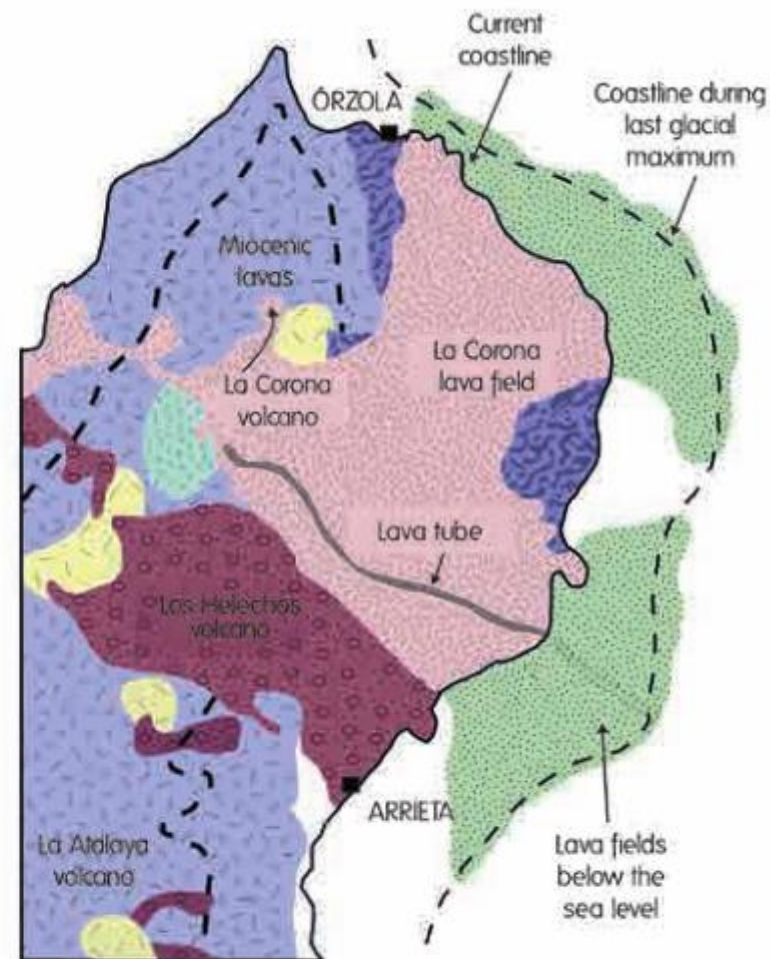
Co-funded by the  
Erasmus+ Programme  
of the European Union







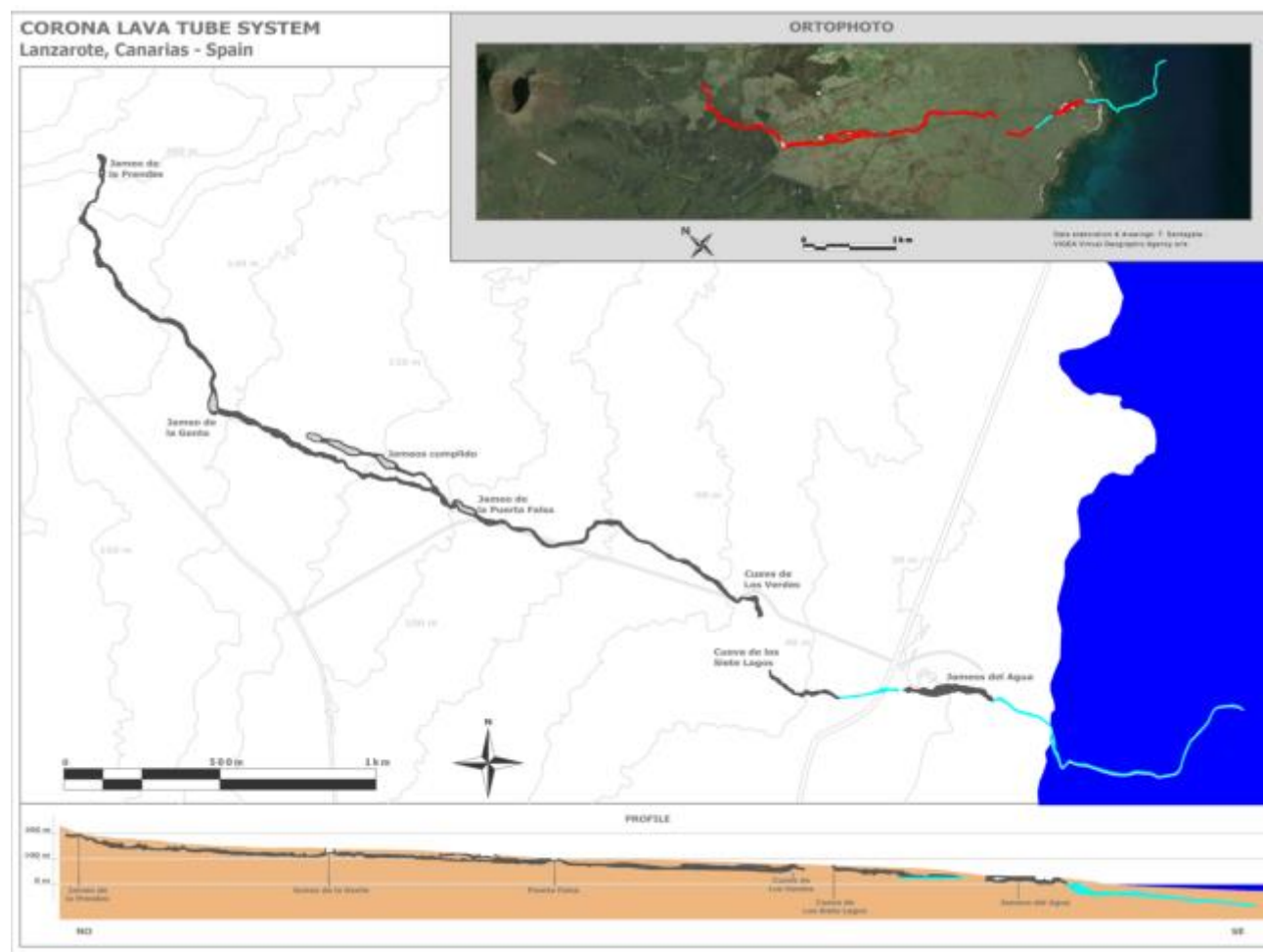
La Corona lava field 20 Ka,  
during last glacial maximum  
(Sea level 120 m lower)

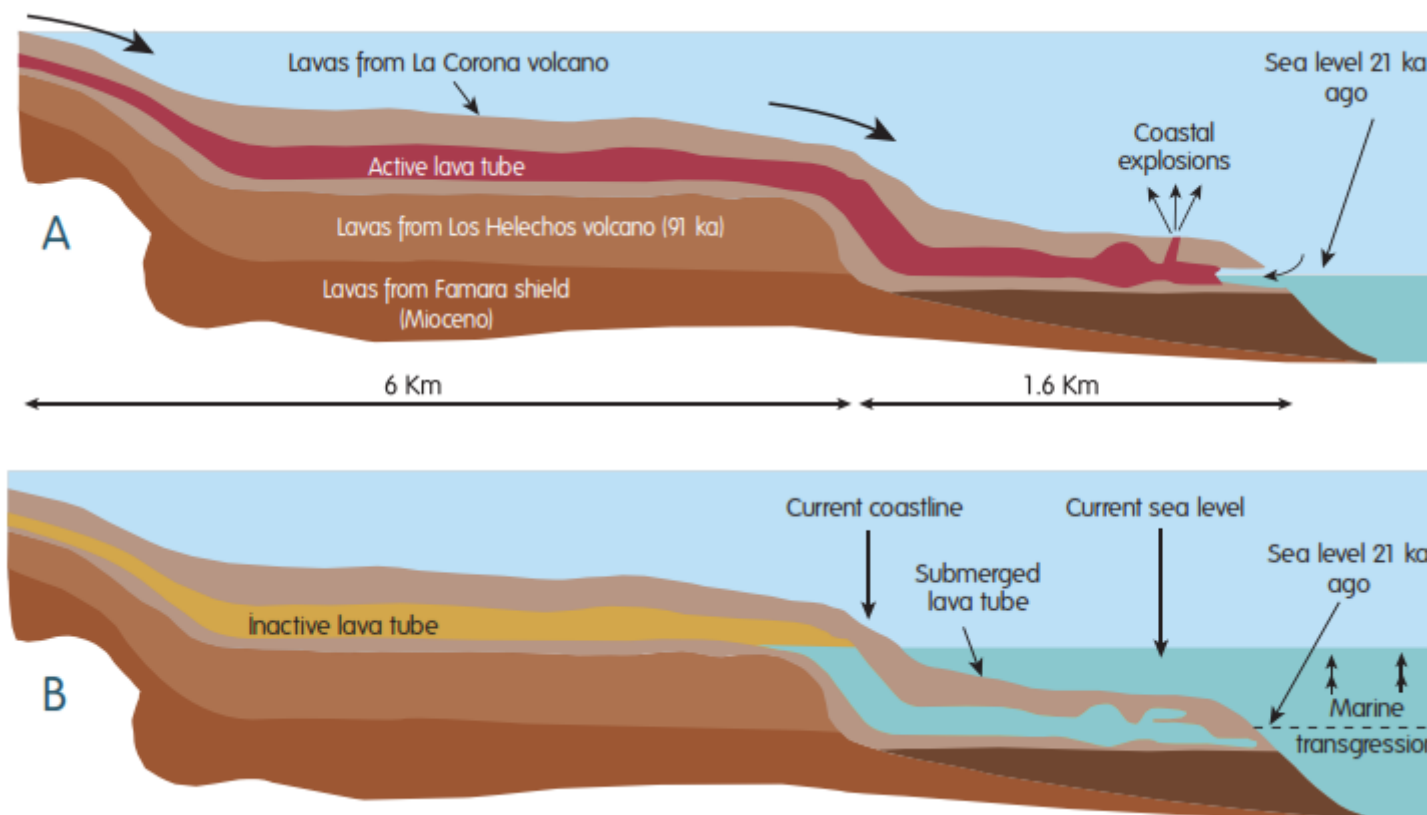


La Corona lava field today



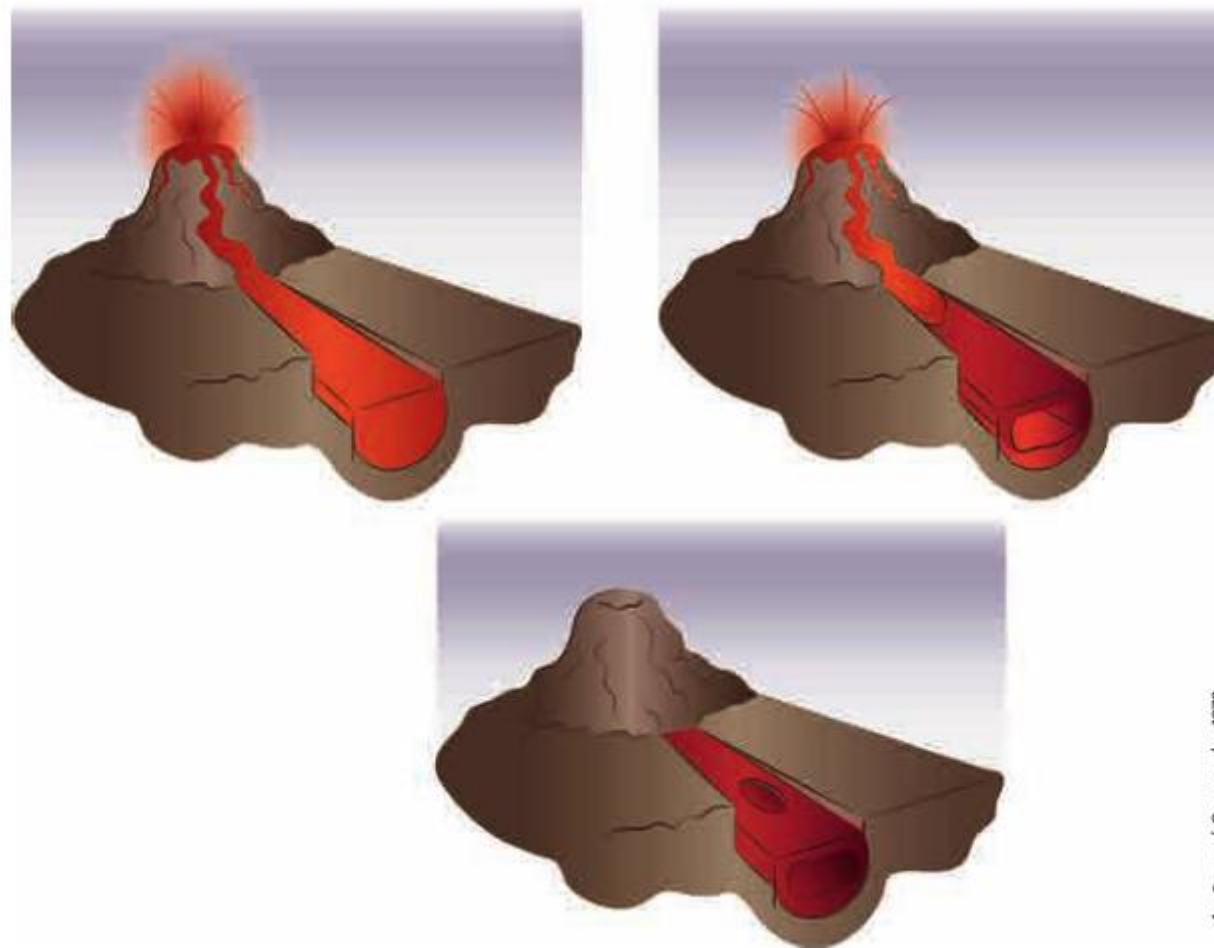
Co-funded by the  
Erasmus+ Programme  
of the European Union







Co-funded by the  
Erasmus+ Programme  
of the European Union



Araña and Carracedo, 1979





Co-funded by the  
Erasmus+ Programme  
of the European Union



## JAMEO: A WORD TO REMEBER







Co-funded by the  
Erasmus+ Programme  
of the European Union



## Center of Art, Culture and Tourism (CACT)





Co-funded by the  
Erasmus+ Programme  
of the European Union



MES	TOTAL	Jameos del Agua	Mirador del Río	Cueva de Los Verdes	Montañas del Fuego	Jardín de Cactus	Castillo de San José
Enero	238.877	58.484	37.999	31.911	73.516	30.436	5.585
Febrero	235.094	57.052	35.835	31.479	73.559	29.999	5.556
Marzo	257.509	65.069	39.668	34.238	77.473	33.628	5.466
Abril	265.035	65.941	37.372	37.597	85.126	31.930	5.057
Mayo	192.110	50.524	27.095	28.330	57.786	23.354	3.499
Junio	205.731	55.512	27.614	32.979	61.344	23.749	3.381
Julio	287.391	74.356	36.593	49.286	87.869	31.805	5.642
Agosto	332.948	85.173	42.210	61.021	99.789	36.255	6.544
Septiembre	230.340	60.321	32.514	37.605	66.625	27.160	4.824
Octubre	224.295	54.801	32.161	33.782	69.479	28.281	4.412
Noviembre	224.440	54.996	34.573	31.453	68.924	28.284	5.203
Diciembre	214.567	51.390	32.656	31.015	65.988	27.331	5.112
<b>TOTAL</b>	<b>2.908.337</b>	<b>733.619</b>	<b>416.290</b>	<b>440.696</b>	<b>887.478</b>	<b>352.212</b>	<b>60.281</b>

FUENTE: Centros de Arte, Cultura y Turismo. Cabildo de Lanzarote.

MES	TOTAL	Jameos del Agua	Mirador del Río	Cueva de Los Verdes	Montañas del Fuego	Jardín de Cactus	Castillo de San José
Enero	218.525	53.016	34.482	30.657	64.184	29.933	5.139
Febrero	217.901	54.174	32.055	31.758	62.819	31.402	4.953
Marzo	80.229	20.155	12.617	11.404	22.033	11.862	1.693
Abril	0	0	0	0	0	0	0
Mayo	0	0	0	0	0	0	0
Junio	36.883	11.026	6.319	6.224	6.770	6.209	335
Julio	89.960	23.108	11.686	19.218	23.332	10.686	1.930
Agosto	187.378	46.728	25.859	39.282	47.089	24.023	4.397
Septiembre	95.794	23.405	13.678	20.720	22.544	13.078	2.369
Octubre	77.179	18.396	11.475	15.412	19.074	11.068	1.754
Noviembre	43.145	10.049	7.781	7.791	10.460	6.101	963
Diciembre	63.282	14.904	11.291	11.115	15.347	9.076	1.549
<b>TOTAL</b>	<b>1.110.276</b>	<b>274.961</b>	<b>167.243</b>	<b>193.581</b>	<b>293.652</b>	<b>153.438</b>	<b>25.082</b>

FUENTE: Centros de Arte, Cultura y Turismo. Cabildo de Lanzarote.

\*Desde junio de 2020 Los Museos Atlántico y Arqueológico dejan de funcionar y cierran su actividad





Co-funded by the  
Erasmus+ Programme  
of the European Union

# CUEVA DE LOS VERDES







Co-funded by the  
Erasmus+ Programme  
of the European Union







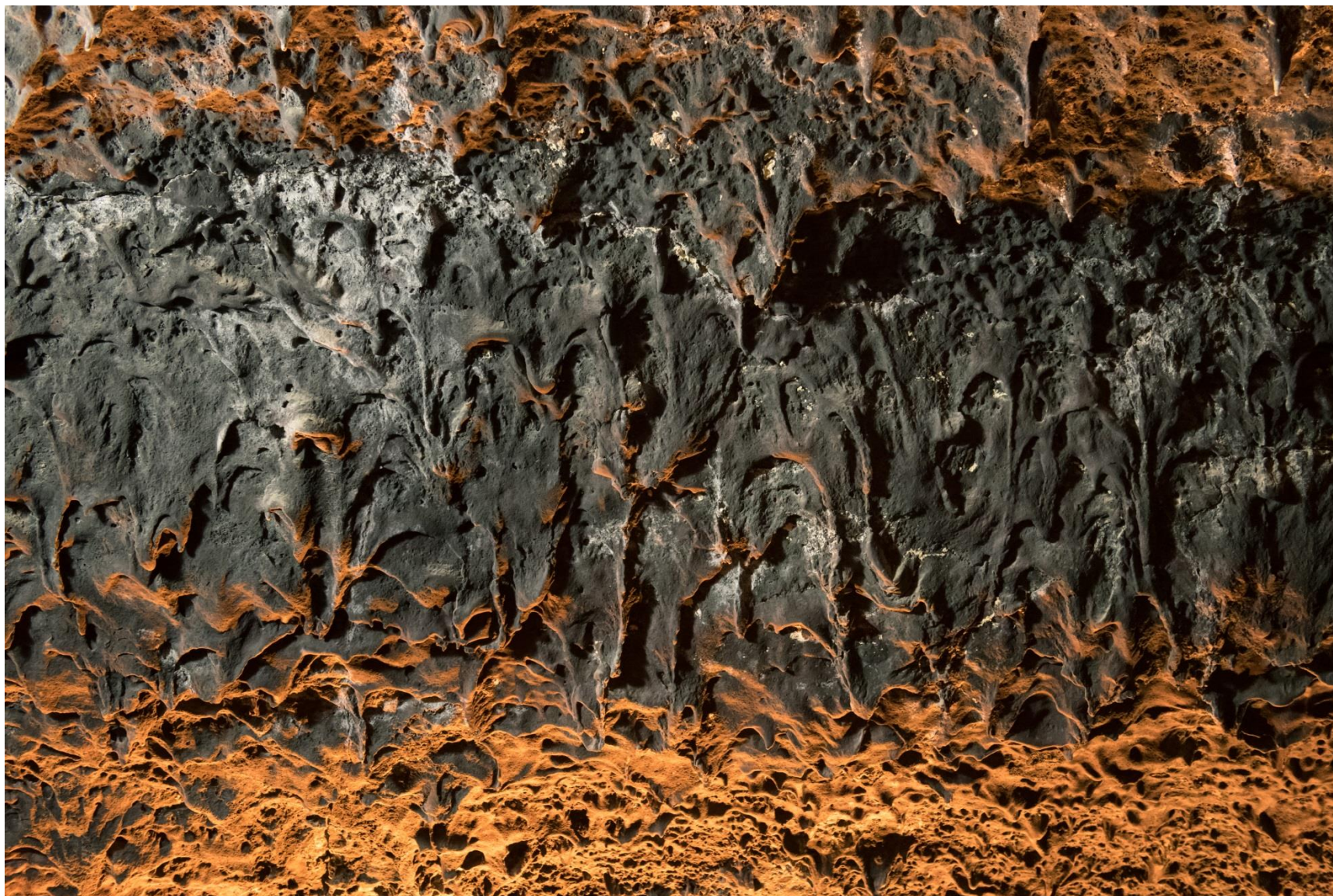
Co-funded by the  
Erasmus+ Programme  
of the European Union







Co-funded by the  
Erasmus+ Programme  
of the European Union







Co-funded by the  
Erasmus+ Programme  
of the European Union







Co-funded by the  
Erasmus+ Programme  
of the European Union







Co-funded by the  
Erasmus+ Programme  
of the European Union



## JAMEOS DEL AGUA





Co-funded by the  
Erasmus+ Programme  
of the European Union







Co-funded by the  
Erasmus+ Programme  
of the European Union







Co-funded by the  
Erasmus+ Programme  
of the European Union











Co-funded by the  
Erasmus+ Programme  
of the European Union







Co-funded by the  
Erasmus+ Programme  
of the European Union







Co-funded by the  
Erasmus+ Programme  
of the European Union







Co-funded by the  
Erasmus+ Programme  
of the European Union





Co-funded by the  
Erasmus+ Programme  
of the European Union







Co-funded by the  
Erasmus+ Programme  
of the European Union





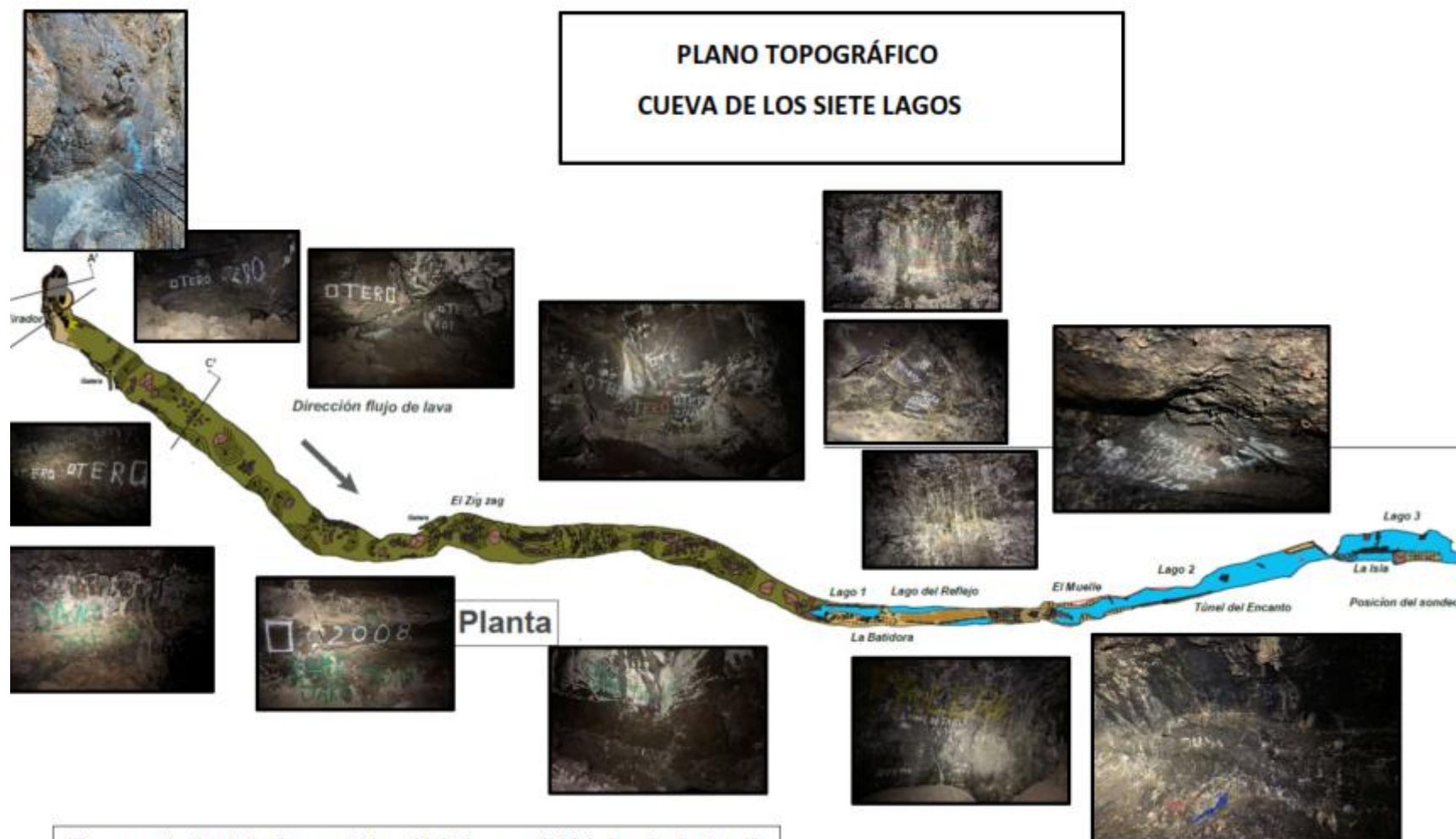
Co-funded by the  
Erasmus+ Programme  
of the European Union



## GEOTOURISM AS A STRATEGY OF GEOCONSERATION







Plano en planta de la Cueva de Los Siete Lagos. (L.M.J. Smets, topógrafo y espeleólogo, G.D. Santana Gómez, espeleólogo).



In conclusion:

A good geo-tourism strategy turns into good conservation measures. Since in these cases, the tourist use causes the environment to be taken care of in a responsible way for its use over time.





Co-funded by the  
Erasmus+ Programme  
of the European Union



¡GRACIAS!

